



# INSTRUCTION BULLETIN

No. 9010969  
Machine: T12  
Published: 12-2015  
Rev. 02

**NOTE: DO NOT DISCARD the Parts List from the Instruction Bulletin. Place the Parts List in the appropriate place in the machine manual for future reference. Retaining the Parts List will make it easier to reorder individual parts and will save the cost of ordering an entire kit.**

*NOTE: Numbers in parenthesis ( ) are reference numbers for parts listed in Bill of Materials.*

Installation instructions for **kit number 9010939 / 9010940**

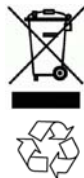
## SYNOPSIS:

This kit contains the parts needed to replace the right scrub head plate and / or left scrub head plate on T12 scrubbers.

Please follow step-by-step instructions.

## SPECIAL TOOLS / CONSIDERATIONS: NONE

(Estimated time to complete: 1.25 hours)



### PROTECT THE ENVIRONMENT

Please dispose of packaging materials, used machine components such as batteries and fluids in an environmentally safe way according to local waste disposal regulations.

Always remember to recycle.

## PREPARATION:


1. Park the machine on a clean level surface, turn off the machine, and remove the key.

*NOTE: Refer to MAINTENANCE section of OPERATOR MANUAL for detailed instructions how to remove the brushes from the main scrub head.*

2. Remove the front or rear brush from the main scrub head. Set the brush and brush door assembly aside.

**FOR SAFETY: Before leaving or servicing machine, stop on level surface, turn off machine, and remove key.**

3. Disconnect the battery cable from the machine.

 **WARNING: Always disconnect battery cable from machine before working on electrical components.**

## INSTALLATION:

*NOTE: The following instructions can be used to replace either the left scrub head plate assembly or the right scrub head plate assembly on the main scrub head.*

1. Disconnect the main wire harness from the brush motor. (Fig. 1 / Fig. 2)
2. Remove the right or left scrub head plate assembly from the main scrub head. Discard the four M6 hex screws and flat washers used to secure the scrub plate assembly to the main scrub head. (Fig. 1 / Fig. 2)
3. Remove the belt cover from the scrub head plate assembly. Set the belt cover and two M8 SEMS hex screws aside. (Fig. 1 / Fig. 2)
4. Remove the brush motor from the scrub head plate assembly. Set the motor and the four M6 SEMS hex screws aside. Discard the belt and the remainder of the scrub plate assembly. (Fig. 1 / Fig. 2)
5. Use the four saved M8 SEMS hex screws to install the brush motor onto the new scrub head plate (1). Do not tighten the M8 SEMS hex screws. (Fig. 1 / Fig. 2)
6. Use the belt installation tool included with the kit to install the belt (3) onto the sheave (4) and the brush motor. (Fig. 1 / Fig. 2)
7. Tighten the M8 SEMS hex screws to secure the brush motor to the scrub head plate (1). (Fig. 1 / Fig. 2)
8. Use four M6 SEMS hex screws (2) to install the scrub head plate assembly onto the scrub head. (Fig. 1 / Fig. 2)
9. Reinstall the belt cover onto the scrub head plate assembly. (Fig. 1 / Fig. 2)
10. Reconnect the main wire harness to the brush motor. (Fig. 1 / Fig. 2)
11. Reinstall the front brush into main scrub head.
12. Reconnect the battery cable to the machine.
13. Start and test the machine. Ensure the front scrub brush functions properly.

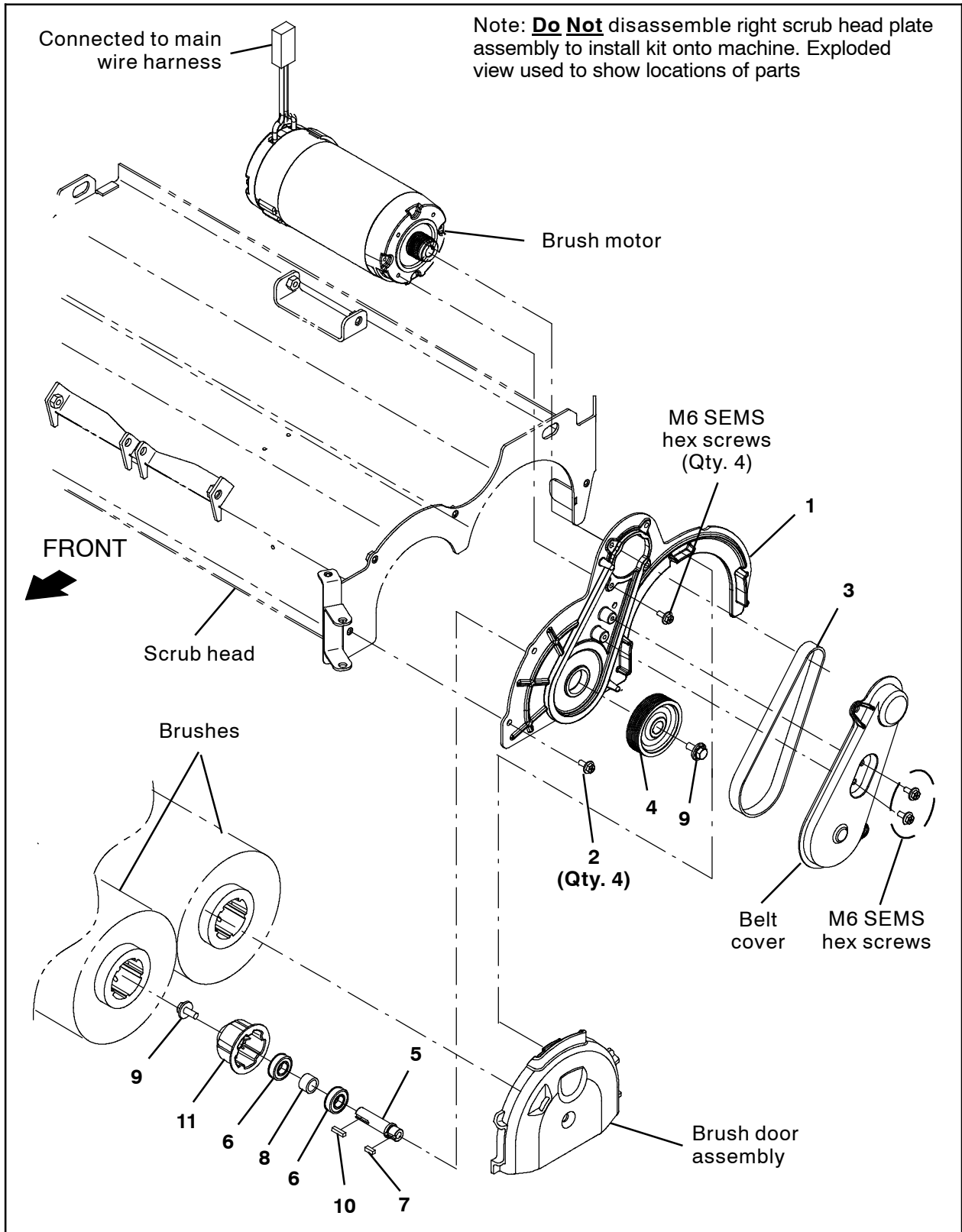


FIG. 1

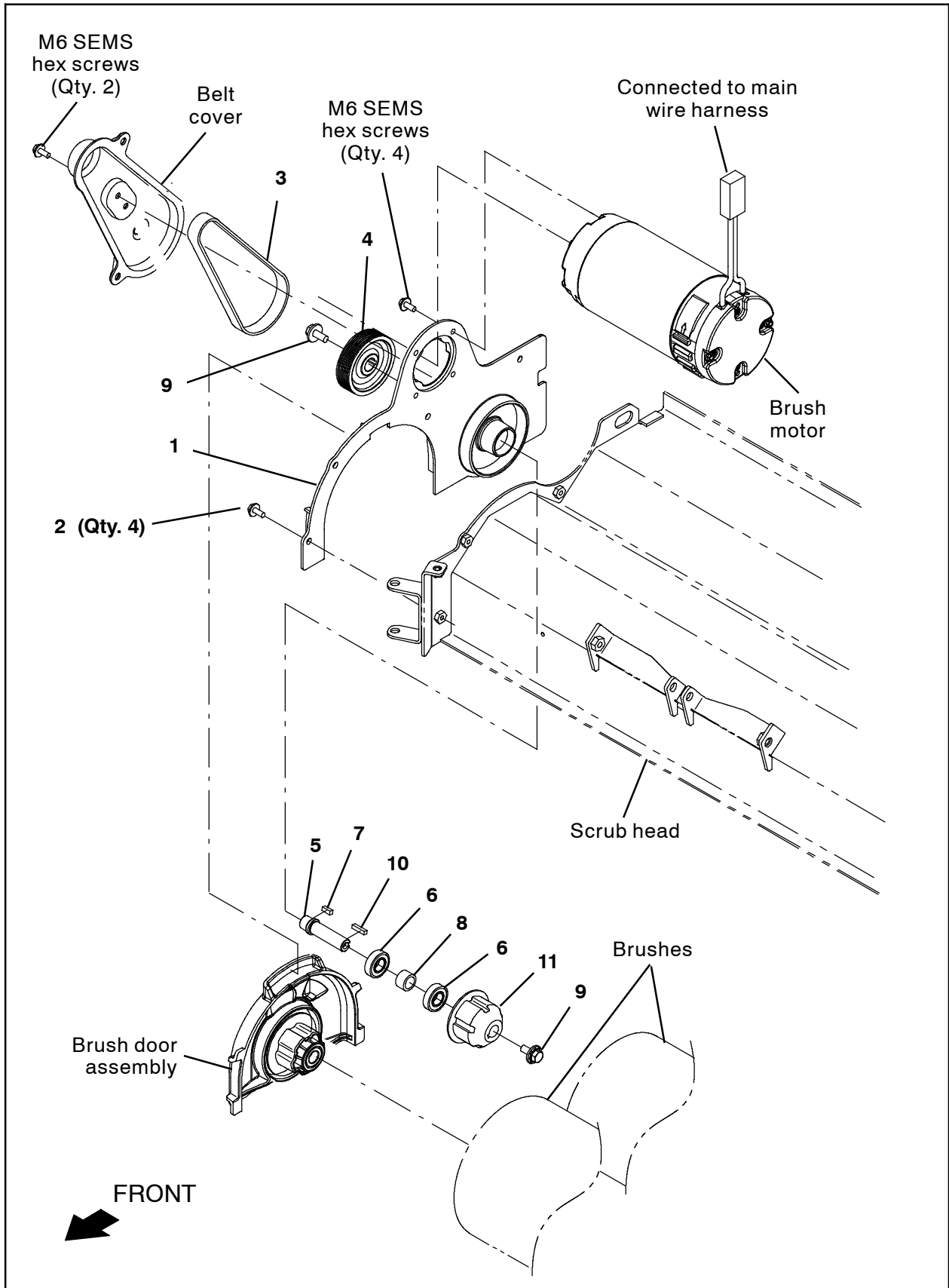


FIG. 2

**Bill Of Materials For Panel Assy, Side, Cyl, LH, Afmkt [T12] - 9010939**

Ref.	Tennant Part No.	Description	Qty.
▽	9010939	Panel Assy, Side, Cyl, LH, Afmkt [T12]	1
▲	1 1200900	Plate, Side, Scrub Head, LH	1
▲	2 1034731	Screw, Hex, M6 X 1.00 X 16, SEMS, SS	4
▲	3 1200334	Belt, Drive, 7 Grv	1
▲	4 1200215	Sheave, 07grv, 2.96pd 0.63b [Pj]	1
▲	5 1200281	Shaft, Drive	1
▲	6 41360	Bearing, Ball, 0.59b 1.26d 0.35w[2seal]	2
▲	7 00961	Key, Sq, 0.19 X 0.19, 0.50l	1
▲	8 1002077	Tube, 0.59id 0.81od 00.5l	1
▲	9 1020341	Screw, Hex, M8 X 1.25 X 20, SS, SEMS	2
▲	10 00911	Key, Sq, 0.19 X 0.19, 0.75l	1
▲	11 378805	Plug, Drive, Brush, Mach	1
▲	12 1203758	Tool, Installation, Belt	1

**Bill Of Materials For Panel Assy, Side, Cyl, RH, Afmkt [T12] - 9010940**

Ref.	Tennant Part No.	Description	Qty.
▽	9010940	Panel Assy, Side, Cyl, RH, Afmkt [T12]	1
▲	1 1200898	Plate, Side, Scb Head, RH	1
▲	2 1034731	Screw, Hex, M6 X 1.00 X 16, SEMS, SS	4
▲	3 1200334	Belt, Drive, 7 Grv	1
▲	4 1200215	Sheave, 07grv, 2.96pd 0.63b [Pj]	1
▲	5 1200281	Shaft, Drive	1
▲	6 41360	Bearing, Ball, 0.59b 1.26d 0.35w[2seal]	2
▲	7 00961	Key, Sq, 0.19 X 0.19, 0.50l	1
▲	8 1002077	Tube, 0.59id 0.81od 00.5l	1
▲	9 1020341	Screw, Hex, M8 X 1.25 X 20, SS, SEMS	2
▲	10 00911	Key, Sq, 0.19 X 0.19, 0.75l	1
▲	11 378805	Plug, Drive, Brush, Mach	1
▲	12 1203758	Tool, Installation, Belt	1

TENNANT COMPANY  
P. O. Box 1452  
Minneapolis, MN 55440-1452